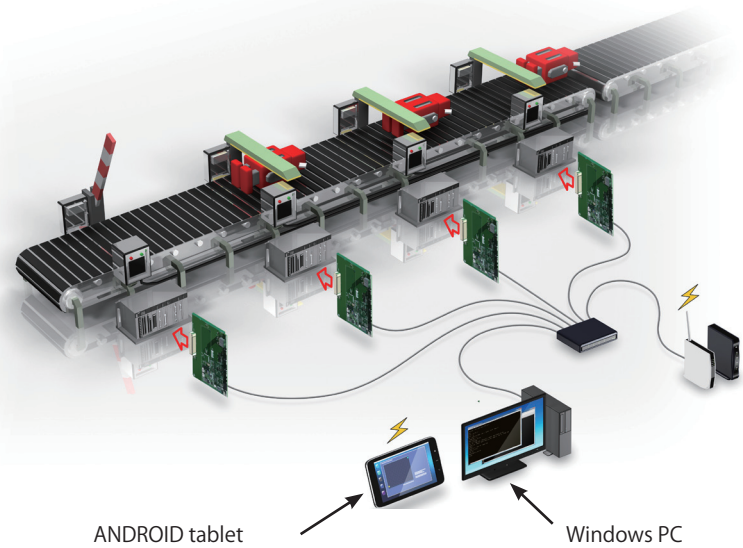


Board controller MPC-IP

MPC-IP is a protocol converter between TCP/IP(Ethernet) and MEWNET(RS-232). This allows you to refer and modify the MBK() array data in the MPC on running. MPC-IP also help you to watch the program status and execute some commands to check the value of variables.

You can use all the functions of the MPC-IP with your PC belongs to the LAN in your work shop and you can do the same things on the far away site by the Internet network system.



Build up a system with the MPC-IP:

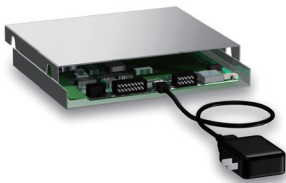
MPC-IP can be inserted in the same rack with the MPC CPU board and placed separately from the MPC rack. To execute MEWNET command is necessary for activating the MPC-IP functions.



The 8 slots system case
CH1: connected to the MPC-IP
CH2: connected to a touch panel display

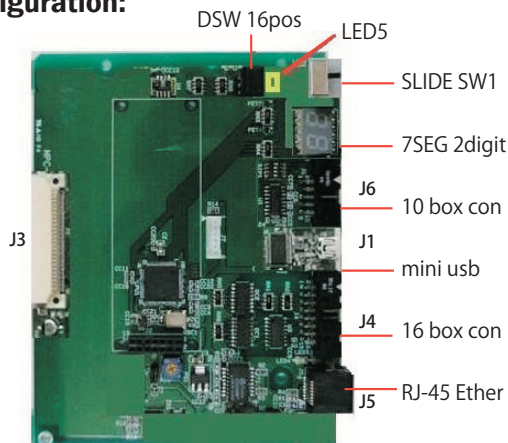


A MPC system with a PC
A PC and a MPC-IP can be connected by setting fix IP address for both of them.



The stand alone example.
When a MPC-IP is placed stand alone, you should connect USB port to a power supply or a PC.
The USB power will be power source of the MPC-IP. The USB port also supports a RS-232c communication.

Hardware configuration:



DSW 0-15 Setting Adrs number
SLIDE SW Choose setting mode or Running mode
7SEG Displays Status
10P NEWNET RS-232 To be connect CH1
miniUSB MPC-IP setting or Programming port
16P I/O port 4input 4 output
RJ-45 Ethernet To LAN
(IP address can be set by FIX address or DHCP)

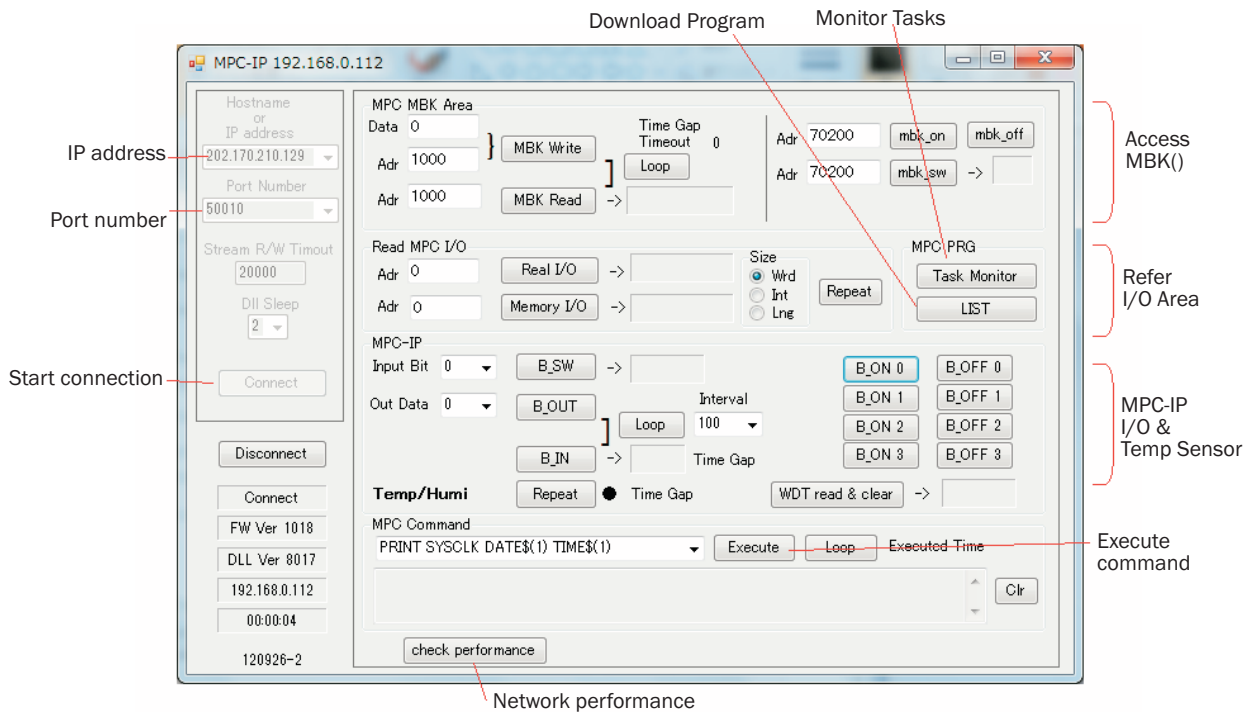
The evaluation software:

An evaluation program can be downloaded and you can try to use all the MPC-IP functions by it. This software had been developed by VB2008 with MPC-IP DLLs made by ACCEL corp and their source codes can be published. By this example and the DLLs you can create your soft ware product to access a MPC-IP in the short time.

- This program needs Microsoft .NET Framework 3.5 upper.
- ANDROID program application example can be published.

Functions of the evaluation program

- Read and display the temperature and the humidity data.
- Refer I/O and memory I/O status
- Download the program
- Read and Modify the MBK array data.
- Execute commands
- Monitoring tasks on running



This program can access to the MPC on running in our work shop. After the first form is opened , you should chose the bottom of the IP address selection list and chose 50010 as it's port number. Then you can push the “connect” button. The MPC-IP connection is exclusive, so you cannot activate the connection , try again later.

After you succeed to connect the MPC-IP, at first you push the “execute” button . The example command “PR SYSCLK DATE\$() TIME\$()” will be executed and it shows the MPC response in the beneath text box.

By modifying the MPC command text, you can refer values of variables. “List” button starts downloading running program . “Task monitor “ button shows the each task's running program number. When you push “Repeat “ button you will know the temperature and the humidity in the MPC rack .

